

|                 |               |       |       |       |
|-----------------|---------------|-------|-------|-------|
| Catalog Number: | Project Name: | Note: | Date: | Type: |
|-----------------|---------------|-------|-------|-------|

The LS1 series is a slim, light weight and energy efficient luminaire that is equipped with 0-10V dimming capability and a field-adjustable CCT and wattage selector.

The fixture includes standard surface mounting kit excellent for utility applications such as parking garage, warehouse, hallway, storage facility, restrooms and stairwell.



**CONSTRUCTION**

The luminaire features matte white finish and galvanized housing. T-bar mounting hole make it easy for installation, and multiple knock-outs provide options for occupancy sensor.

**OPTICAL SYSTEM**

Luminaire is built with the highest quality driver that is Universal Voltage (120V-277V), uses long lasting, high-efficient LED package.

**LENS**

Frosted lens diffuser reduces glare and improves overall light output.

**SENSOR READY**

Motion sensor and daylight harvesting sensor available, for factory installation.

**ENERGY SAVINGS**

Over 50% energy savings than traditionally fluorescent fixtures, low heat productions requires less maintenance and operation cost.

**LISTING**

UL Listed, DLC Premium Listed

**WARRANTY**

5 year Limited Warranty

|           | WATTAGE     | DELIVERED LUMENS | EFFICACY |
|-----------|-------------|------------------|----------|
| <b>4'</b> | 25W/30W/40W | 5200 @ 3500K     | 134 lm/W |
| <b>8'</b> | 55W/60W/65W | 8450 @ 3500K     | 132 lm/W |

*Based on the highest wattage @ 3500K default setting, 80 CRI. Actual lumens may vary.*

**TECHNICAL SPECIFICATION**

|                     |                                     |
|---------------------|-------------------------------------|
| CCT                 | 3500K/4000K/5000K                   |
| CRI                 | 80+                                 |
| DIMMABLE            | 0-10V Continuous Dimming (10%-100%) |
| VOLTAGE             | 120V-277V                           |
| POWER FREQUENCY     | 50/60 Hz                            |
| POWER FACTOR        | >0.9                                |
| THD                 | ≤10%                                |
| WORKING TEMPERATURE | -40°F ~ 122°F                       |
| STORAGE TEMPERATURE | -40°F ~ 158°F                       |
| IP RATING           | IP44, Suitable for damp locations   |
| WARRANTY            | 5 year limited                      |

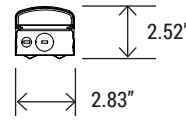
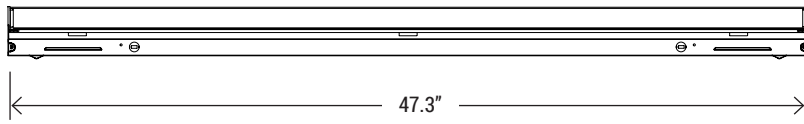


ORDERING SAMPLE:  -  -  -  -  -

| Series                                  | Size          | CCT/Wattage                                 | Accessories/Options         |                                             |                                                          |
|-----------------------------------------|---------------|---------------------------------------------|-----------------------------|---------------------------------------------|----------------------------------------------------------|
| PT-LS1<br>LED Linear Strip<br>Luminaire | 4F (4-footer) | 3CP<br>(3500K/4000K/5000K)<br>(25W/30W/40W) | EM Battery                  | Sensor                                      | Mounting                                                 |
|                                         | 8F (8-footer) | 3CP<br>(3500K/4000K/5000K)<br>(55W/60W/65W) | ___ Blank<br>PT-EMN-08W-050 | ___ Blank<br>PT-MSH-PR<br>MS-RC2 (Required) | ___ Blank (Standard surface mount)<br>A-CBL<br>WG-LS1-4F |
|                                         |               |                                             | PT-EMN-15W-050              |                                             |                                                          |

|                 |               |       |       |       |
|-----------------|---------------|-------|-------|-------|
| Catalog Number: | Project Name: | Note: | Date: | Type: |
|-----------------|---------------|-------|-------|-------|

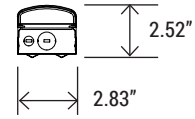
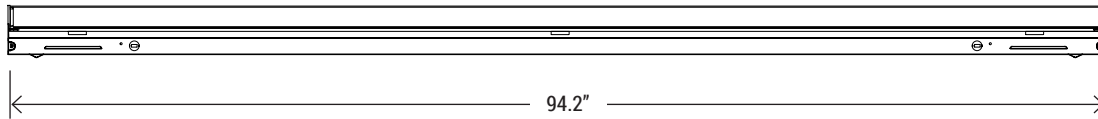
**DIMENSION**



QTY/BOX

**6**

**4'** PT-LS1 Series

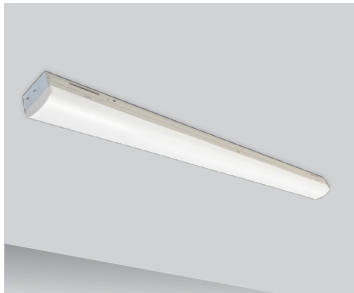


QTY/BOX

**6**

**8'** PT-LS1 Series

**MOUNTING OPTION**

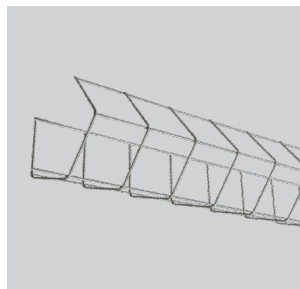


**SM**  
Surface mount (Standard)  
Comes with junction cover



**A-CBL**  
Hanging wire for strip light

**WIRE GUARD OPTION**



**WG-LS1-4F**  
Wire guard for 4-ft LS1  
*(For 8-ft fixtures, two WG-LS1-4F are needed)*

**EM BATTERY OPTION**



**PT-EMN-08W-050 (4FT)**  
**PT-EMN-15W-050 (8FT)**  
LED Emergency Driver

**SENSOR OPTION**

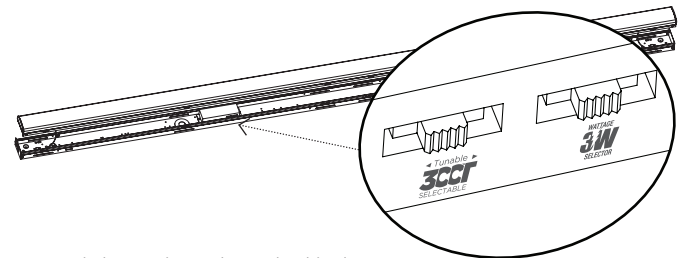


**PT-MSH-PR**  
Motion Sensor



**MSH-RC2**  
Intelligent Control Unit  
(Required)

**CCT AND WATTAGE SELECTOR**



- DIP switches are located onto the drive box.
- Select a wattage and color temperature by sliding switch left or right respectively to the desired value.